

S925TX MINI SKID STEER



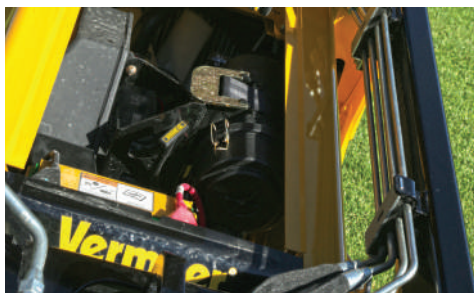
BUILT TO PERFORM. Get more out of each day with a tipping capacity of 2643 lb (1198.8 kg) and rated operating capacity of 925 lb (419.6 kg) while reaching to maximum hinge pin height at 84.5" (214.6 cm).



HYDRAULIC BOOST. The S925TX comes standard with a dual hydraulic auxiliary system with high flow to power the most demanding attachments and a low flow to give the operator maximum control.



ADAPT TO THE CHALLENGE. With a universal mounting plate, option of 7" (17.8 cm) or 9" (22.9 cm) tracks and multiple engine options to choose from, the S925TX has the options to help increase productivity on the job.



SERVICEABILITY. Stay productive on the job with accessible service points. The S925TX also offers simple hose routings and ease of access to the fuse panel for maximum efficiency.



OPERATOR COMFORT. Enjoy the ride with a chariot-style platform for operational comfort and pilot-operated ground drive to help you maintain smooth control on the worksite and in tight areas.



REST ASSURED. The 3-year/3000 hour extended limited warranty on the loader arms gives operators peace of mind on the job site.

S925TX MINI SKID STEER

GENERAL

Length with standard bucket: 106" (269.2 cm)

Length without standard bucket: 84" (213.4 cm)

Width with standard bucket (7" [17.8 cm] tracks): 42" (106.7 cm)

Width without standard bucket (7" [17.8 cm] tracks): 36" (91.4 cm)

Width with standard bucket (9" [22.8 cm] tracks): 42" (106.7 cm)

Width without standard bucket (9" [22.8 cm] tracks): 40" (101.6 cm)

Height: 58" (147.3 cm)

Height (to hinge pin): 84.5" (214.6 cm)

Ground clearance: 6" (15.2 cm)

Bucket rollback at ground level standard bucket: 33°

Dump angle at max pin height standard bucket: 26°

Reach of standard bucket at full height: 22.87" (58.1 cm)

Weight with standard bucket (9" [22.8 cm] tracks): 3465 lb (1571.7 kg)

Weight with no bucket, (9" [22.8 cm] tracks, diesel engine): 3350 lb (1519.5 kg)

ENGINE OPTION ONE

Make and model: Kubota V1505

Fuel type: Diesel

Fuel tank capacity: 13 gal (49.2 L)

Gross horsepower: 25 hp (18.6 kW)

Max engine torque: 69 ft-lb (93.6 Nm)

Cooling system: Liquid

Max angle of inclination: 30°

Hydraulic system flow: 12 gpm (45.4 L/min)

ENGINE OPTION TWO (INTERNATIONAL ONLY)

Make and model: Kubota V1505

Fuel type: Diesel

Fuel tank capacity: 13 gal (49.2 L)

Gross horsepower: 35 hp (26.1 kW)

Max engine torque: 68 ft-lb (47.6 Nm)

Cooling system: Liquid

Max angle of inclination: 30°

Hydraulic system flow: 15.5 gpm (58.7 L/min)

ENGINE OPTION THREE

Make and model: Kubota WG1605

Fuel type: Gas

Fuel tank capacity: 13 gal (49.2 L)

Gross horsepower: 40 hp (29.9 kW)

Max engine torque: 89 ft-lb (120.7 Nm)

Cooling system: Liquid

Max angle of inclination: 30°

Hydraulic system flow: 15.5 gpm (58.7 L/min)

TRACK PERFORMANCE

Rated operating capacity (SAE): 925 lb (419.6 kg)

Tipping capacity (with 165 lb [74.84 kg] operator): 2643 lb (1198.9 kg)

Travel speed (fwd/rev): 4.5 mph (7.3 km/h)/3.0 mph (4.8 km/h)

Ground pressure (7" [17.8 cm] tracks /9" [22.8 cm] tracks): 5 psi/4 psi (.4 bar/.3 bar)

OPERATIONAL

Steering: Dual axis, pilot-operated joystick

Lift: Dual axis, common bucket lever

Curl: Dual axis, common bucket lever